

---

# FP230, FP240 FORAGE HARVESTERS REPAIR MANUAL COMPLETE CONTENTS

SECTION 00 - GENERAL INFORMATION .....	2
SECTION 31 - IMPLEMENT DRIVELINES .....	2
SECTION 35 - HYDRAULICS .....	5
SECTION 39 - FRAME .....	5
SECTION 44 - AXLES AND WHEELS .....	6
SECTION 55 - ELECTRICAL .....	6
SECTION 60 - PRODUCT FEEDING .....	9
SECTION 64 - CHOPPING .....	9
SECTION 70 - EJECTION .....	10

The following pages are the collation of the contents pages from each section and chapter of the FP230, FP240 Repair manual.

The sections used through out all New Holland product Repair manuals may not be used for each product. Each Repair manual will be made up of one or several books. Each book will be labeled as to which sections are in the overall Repair manual and which sections are in each book.

The sections listed above are the sections utilized for the FP230, FP240 Forage Harvesters.

---

## SECTION 00 - GENERAL INFORMATION

BOOK 1 - 86900643

### Chapter 1 - General Information

#### CONTENTS

<b>Section</b>	<b>Description</b>	<b>Page</b>
00 000	Introduction .....	2
	Safety .....	3
	Technical Information .....	16
	Lubricants .....	22
	Harvester Settings and Tools .....	23
	Information Decals .....	24
	Specifications .....	26
	Preseason and Predelivery Checklist .....	29

## SECTION 31 - IMPLEMENT DRIVELINES

BOOK 1 - 86900643

### Chapter 1 - Driveline

#### CONTENTS

<b>Section</b>	<b>Description</b>	<b>Page</b>
31 000	Specifications .....	2
	Description of Operation .....	4
31 201	Tractor PTO Repair .....	5
31 201	Driveshaft Front Bearing Replacement .....	10
31 201	Driveshaft Rear Bearing Replacement .....	15
31 201	Driveshaft and Center Bearing Replacement .....	18
31 214	Secondary PTO Repair .....	31

---

## SECTION 31 - IMPLEMENT DRIVELINES

BOOK 1 - 86900643

### Chapter 2 - Bevel Gearbox

#### CONTENTS

Section	Description	Page
31 000	Specifications .....	2
	Description of Operation .....	2
31 220	Bevel Gearbox Repair .....	3

## SECTION 31 - IMPLEMENT DRIVELINES

BOOK 1 - 86900643

### Chapter 3 - Reversing Gearbox

#### CONTENTS

Section	Description	Page
31 000	Specifications .....	2
	Description of Operation .....	2
31 222	Reversing Gearbox Repair .....	5

---

## SECTION 31 - IMPLEMENT DRIVELINES

BOOK 1 - 86900643

### Chapter 4 - Electric Clutch

#### CONTENTS

Section	Description	Page
31 000	Specifications .....	2
	Special Tools .....	2
	Description of Operation .....	2
31 224	Electrical Testing .....	4
31 224	Brush Replacement .....	5
31 224	Brush Box Replacement .....	5
31 224	Armature Air Gap Adjustment .....	8
31 224	Electric Clutch Replacement .....	12
31 224	Burnishing the Electric Clutch .....	17
31 224	Checking Electric Clutch Slip Torque .....	18

## SECTION 31 - IMPLEMENT DRIVELINES

BOOK 1 - 86900643

### Chapter 5 - Drives

#### CONTENTS

Section	Description	Page
31 000	Specifications .....	2
	Description of Operation .....	2
31 203	Cutterhead U-joint Repair .....	3
31 203	Cutterhead Single Shearbolt Hub Repair .....	8
31 203	Cutterhead Double Shearbolt Hub Repair .....	11
31 203	Cutterhead Slip Clutch Repair .....	15
31 260	Top Feedroll U-joint and Clutch Repair .....	18
31 260	Top Feedroll U-joint and Shearbolt Hub Repair .....	24
31 250	Attachment Drive PTO Repair .....	28

---

## SECTION 35 - HYDRAULICS

BOOK 1 - 86900643

### Chapter 1 - Hydraulics

#### CONTENTS

<b>Section</b>	<b>Description</b>	<b>Page</b>
35 000	Specifications .....	2
	Description of Operation .....	2
35 100	Attachment Lift Cylinder Repair .....	3
31 528	Tongue Swing Cylinder Repair .....	6

## SECTION 39 - FRAME

BOOK 1 - 86900643

### Chapter 1 - Frame

#### CONTENTS

<b>Section</b>	<b>Description</b>	<b>Page</b>
39 000	Description of Operation .....	2
39 114	Attachment Support Roller Repair .....	2
39 114	Attachment Lift Arm and Tube Replacement .....	3
39 110	Tongue Replacement .....	6

---

## SECTION 44 - AXLES AND WHEELS

BOOK 1 - 86900643

### Chapter 1 - Axles and Wheels

#### CONTENTS

Section	Description	Page
44 000	Specifications .....	2
	Description of Operation .....	2
	Wheel Spacing Charts .....	3
44 100	Wheel Bearing Repair .....	4
44 130	Tandem Axle Adjustment .....	5

## SECTION 55 - ELECTRICAL

BOOK 2 - 86900644

### Chapter 1 - Circuits, Harnesses and Connectors

#### CONTENTS

Section	Description	Page
55 000	Tools .....	2
	Overview .....	2
	Codes for Wiring Diagrams .....	3
	Description of Circuits .....	6
	Harness Description .....	44
	Connectors Description .....	48
55 100	18-Pin Connector Repair .....	51
55 100	Gray Connectors Repair .....	54
55 100	Light Plug Repair .....	55
55 100	Power Plug Repair .....	56

---

## SECTION 55 - ELECTRICAL

BOOK 2 - 86900644

### Chapter 2 - Components

#### OPERATION, TESTING AND REPLACEMENT

##### CONTENTS

<b>Section</b>	<b>Description</b>	<b>Page</b>
55 000	Overview .....	2
55 000	Relays .....	5
55 000	Circuit Breakers .....	11
55 000	Fuses .....	12
55 000	Diodes .....	13
55 640	Arc Suppression Module .....	14
55 408	Power and Detect Lights .....	15
55 408	Alarm .....	16
55 618	Power, Enable and Feed Roll Switches .....	17
55 840	Joystick .....	19
55 640	Timer Module .....	21
55 840	Spout Motor .....	23
55 840	Deflector Motor .....	25
55 640	Light Module .....	26

## SECTION 55 - ELECTRICAL

BOOK 2 - 86900644

### Chapter 3 - Metalert® III Metal Detector and Stopping System

##### CONTENTS

<b>Section</b>	<b>Description</b>	<b>Page</b>
55 000	Overview .....	2
55 800	Sensor Replacement .....	5
55 800	Pawl Solenoid Replacement .....	13
55 800	Pawl Switch Replacement .....	16
55 800	Stop Pawl Replacement .....	16
55 800	Stop Springs Replacement .....	19

---

## SECTION 55 - ELECTRICAL

BOOK 2 - 86900644

### Chapter 4 - Troubleshooting Metal Detector Units

#### CONTENTS

Section	Description	Page
55 000	Overview .....	2
55 800	Metal Detector Major Symptoms .....	4
55 800	Metal Detector Quick Checks .....	7
55 800	Portable Diagnostic Tool Operation .....	22
	Noise Test - Field Operation .....	43
55 800	Troubleshooting Charts - Metal Detector Units .....	44
55 800	Wire Diagrams - Harvester with Metal Detector .....	76
55 800	Main Electrical Panel Connectors .....	81
55 800	Electrical Connectors .....	83

## SECTION 55 - ELECTRICAL

BOOK 2 - 86900644

### Chapter 5 - Troubleshooting Non Metal Detector Units

#### CONTENTS

Section	Description	Page
55 000	Overview .....	2
	Non Metal Detector Quick Checks .....	3
	Troubleshooting Charts - Non Metal Detector Units .....	18
	Wire Diagrams - Harvester without Metal Detector .....	43
	Main Electrical Panel Connectors .....	50
	Electrical Connectors .....	52



---

## SECTION 60 - PRODUCT FEEDING

BOOK 2 - 86900644

### Chapter 1 - Feed Rolls

#### CONTENTS

Section	Description	Page
60 000	Specifications .....	2
	Tools .....	2
	Description of Operation .....	3
60 107	Top Feed Rolls Replacement .....	4
60 103	Lower Front Feed Roll Without Metal Detector Replacement .....	11
60 155	Lower Front Feed Roll With Metal Detector Replacement .....	13
60 110	Crop Guide Replacement .....	19
60 103	Smooth Feed Roll Scraper Replacement .....	20
60 103	Smooth Feed Roll Replacement .....	21

## SECTION 64 - CHOPPING

BOOK 2 - 86900644

### Chapter 1 - Cutterhead

#### CONTENTS

Section	Description	Page
64 000	Specifications .....	2
	Special Tools .....	2
	Description of Operation .....	3
	Troubleshooting .....	4
64 100	Worn Knife Replacement and Regauging .....	9
64 100	Damaged Knife Replacement .....	11
64 100	Cutterhead Removal and Installation .....	14
64 140	Sharpening Stone Replacement .....	22
64 140	Carrier, Shaft, and Rail Repair .....	23
64 140	Sharpener Adjustment .....	26
64 150	Shear Bar Replacement .....	27
64 150	Shear Bar Adjuster Maintenance .....	30

---

## SECTION 64 - CHOPPING

BOOK 2 - 86900644

### Chapter 2 - Crop Processor

#### CONTENTS

<b>Section</b>	<b>Description</b>	<b>Page</b>
64 000	Special Tools .....	2
	Description of Operation .....	2
64 160	Crop Processor Removal and Installation .....	4
64 160	Processor Roll Repair .....	14
64 160	Crop Processor Assembly .....	28
64 160	Idler Assembly Repair .....	30

## SECTION 70 - EJECTION

BOOK 2 - 86900644

### Chapter 1 - Auger

#### CONTENTS

<b>Section</b>	<b>Description</b>	<b>Page</b>
70 000	Specifications .....	2
	Description of Operation .....	2
70 180	Auger Removal .....	3
70 180	Auger Liner Replacement .....	6
70 180	Auger and Trough Removal .....	6

---

## SECTION 70 -EJECTION

BOOK 2 - 86900644

### Chapter 2 - Blower

#### CONTENTS

<b>Section</b>	<b>Description</b>	<b>Page</b>
70 000	Specifications .....	2
70 000	Description of Operation .....	2
70 100	Blower Slip Clutch Repair and Adjustment .....	3
70 120 17	Blower Paddle Replacement and Adjustment .....	8
70 120 13	Blower Liner Replacement .....	10
70 120 09	Blower Assembly Repair .....	15

## SECTION 70 - EJECTION

BOOK 2 - 86900644

### Chapter 3 - Spout

#### CONTENTS

<b>Section</b>	<b>Description</b>	<b>Page</b>
70 140	Spout Motor Gearbox Repair .....	2
70 140	Rotation Acme Screw Replacement .....	5
70 140	Spout Base Support Replacement .....	6
70 140	Spout Liner Replacement .....	10



**SECTION 00 - GENERAL INFORMATION**

**Chapter 1 - General Information**

**CONTENTS**

<b>Section</b>	<b>Description</b>	<b>Page</b>
00 000	Introduction .....	2
	Safety .....	3
	Technical Information .....	16
	Lubricants .....	22
	Harvester Settings and Tools .....	23
	Information Decals .....	24
	Specifications .....	26
	Preseason and Predelivery Checklist .....	29

## INTRODUCTION

This repair manual provides the technical information needed to properly service New Holland FP230 and FP240 pull type forage harvesters. Use this manual in conjunction with the operator's manual for complete operation, adjustment, and maintenance information.

On New Holland equipment, left and right are determined by standing behind the unit, looking in the direction of travel.

**NOTE:** *Some photographs in this manual were taken of prototype or previous production models. Current production models may vary in some detail.*

## PRECAUTIONARY STATEMENTS

### PERSONAL SAFETY

Throughout this manual and on machine decals, you will find precautionary statements (“**DANGER**”, “**WARNING**”, and “**CAUTION**”) followed by specific instructions. These precautions are intended for the personal safety of you and those working with you. Please take the time to read them.

---

 **DANGER** 

---

This word “**DANGER**” indicates an immediate hazardous situation that, if not avoided, will result in death or serious injury. The color associated with Danger is RED.

---

---

 **WARNING** 

---

This word “**WARNING**” indicates a potentially hazardous situation that, if not avoided, could result in death or serious injury. The color associated with Warning is ORANGE.

---

---

 **CAUTION** 

---

This word “**CAUTION**” indicates a potentially hazardous situation that, if not avoided, may result in minor or moderate injury. It may also be used to alert against unsafe practices. The color associated with Caution is YELLOW.

---

**FAILURE TO FOLLOW THE “DANGER”, “WARNING”, AND “CAUTION” INSTRUCTIONS MAY RESULT IN SERIOUS BODILY INJURY OR DEATH.**

### MACHINE SAFETY

The precautionary statement (“**IMPORTANT**”) is followed by specific instructions. This statement is intended for machine safety.

**IMPORTANT:** *The word “IMPORTANT” is used to inform the reader of something he needs to know to prevent minor machine damage if a certain procedure is not followed.*

### INFORMATION

**NOTE:** *Instructions used to identify and present supplementary information.*

## FLUID SAFETY

### HANDLE FLUIDS SAFELY

When you work around fuel or other flammable material, do not smoke, work near heaters or other fire hazards.

Do not store flammable material in open containers.

Store flammable fluids away from fire hazards.

Do not incinerate or puncture pressurized containers.

Make sure machine is clean of trash, grease, oil, and debris.

Do not store oily rags; they can ignite and burn spontaneously.

Keep a first aid kit and fire extinguisher handy.

Keep emergency numbers for doctors, ambulance service, hospital, and fire department near your telephone.

### AVOID HEATING NEAR PRESSURIZED FLUID LINES

Flammable spray can be generated by heating near pressurized fluid lines, resulting in severe burns to yourself and bystanders.

Do not heat by welding, soldering, or using a torch near pressurized fluid lines.

Pressurized lines can be accidentally cut or damaged when heat goes beyond the immediate flame area.

### USE CARE AROUND HIGH-PRESSURE FLUID LINES

Escaping fluid under pressure can penetrate the skin causing serious injury.

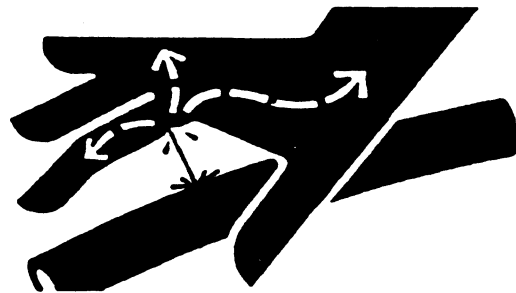
Avoid the hazard by relieving pressure before disconnecting hydraulic or other lines.

Tighten all line connections before applying pressure.

Check for leaks with a piece of cardboard.

Protect hands and body from high pressure fluids.

If an accident occurs, see a doctor immediately. Any fluid injected into the skin must be surgically removed within a few hours or gangrene may result. Doctors unfamiliar with this type of injury should reference a knowledgeable medical source.



### SAFE SERVICE PROCEDURES

Wear protective clothing.

Do not wear loose clothing.

Wear close fitting clothing.

Wear safety glasses or face shield as required.

Wear other safety equipment appropriate to the job.

Wear earplugs or earmuffs as required.

Use caution when working around moving parts.

Use tools appropriate for the job.

Replace missing or damaged safety decals.

Reinstall all shielding removed for servicing.

Replace any damaged or missing shielding.



**⚠ WARNING ⚠**

You can help avoid accidents by following these precautions:

---

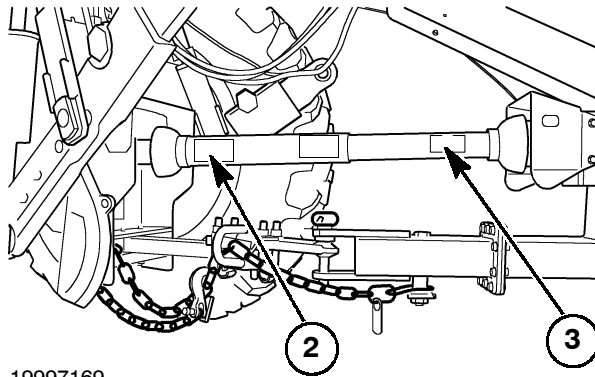
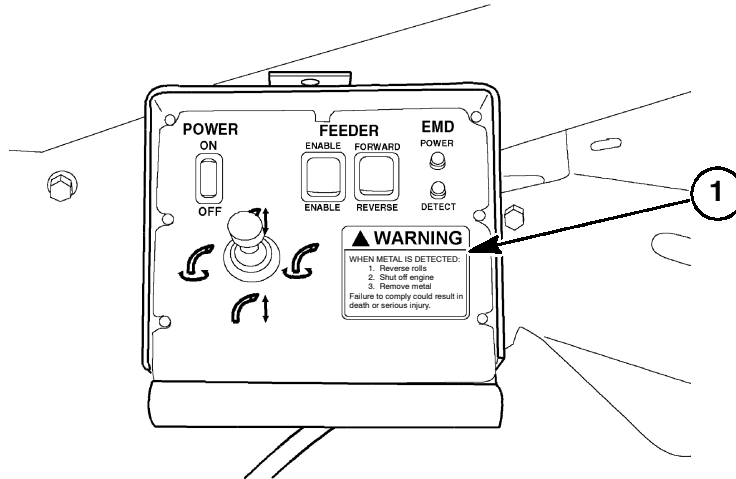
1. Do not attempt to lubricate or make any adjustments on the Harvester while it is in motion or if the tractor is running.
2. Allow only one operator on the tractor. Do not permit anyone to ride on the Harvester.
3. Keep all shields in place while the Harvester is in operation. Never operate a PTO machine without the PTO shaft shields in place.
4. If the feeding or cutting areas of the Harvester become plugged, do not attempt to manually unplug or remove any material while the Harvester is in operation or the tractor engine is running.
5. Do not attempt to force material into the Harvester with your feet or hands while it is in operation.
6. After making adjustments, be sure all tools are removed from the Harvester and check the Harvester thoroughly for loose parts or bolts.
7. Be sure the cutterhead has stopped rotating and the tractor engine is shut off before opening the auger, crop processor, cutterhead, and sharpener covers. There are rotating parts under these covers. The parts may continue to rotate after the power is shut off. Look and listen for evidence of rotation. Do not open any covers until all parts have stopped turning.
8. Make all knife adjustments with extreme care. Wear safety goggles when sharpening knives. Be sure the cutterhead cover is closed when sharpening knives.
9. Do not work under the attachment when it is in the raised position unless it is safely blocked.
10. Be sure the brakes are locked before leaving the tractor, and do not disconnect a wagon on an incline without first blocking the wheels.
11. Use the flashing lights and reflectorized signs provided and keep them in good maintenance to help prevent highway accidents.



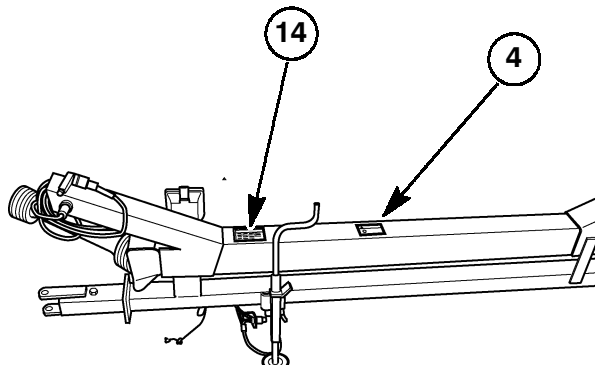
## SAFETY DECALS

The following safety decals have been placed on your machine in the areas indicated. They are intended for your personal safety and for those working with you. Please take this manual and walk

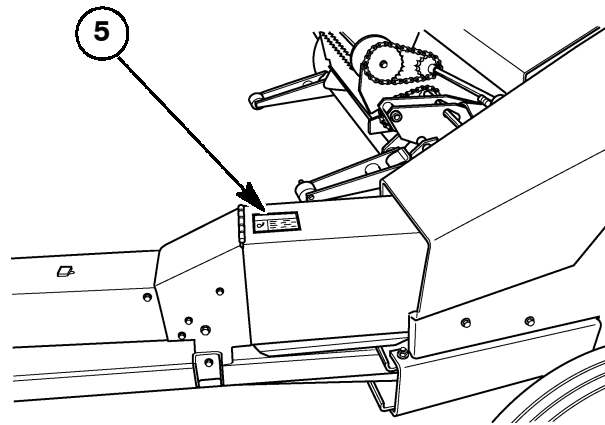
around your machine to note the content and location of these warning signs. Review these warning signs and the operating instructions detailed in this manual with your machine operators.



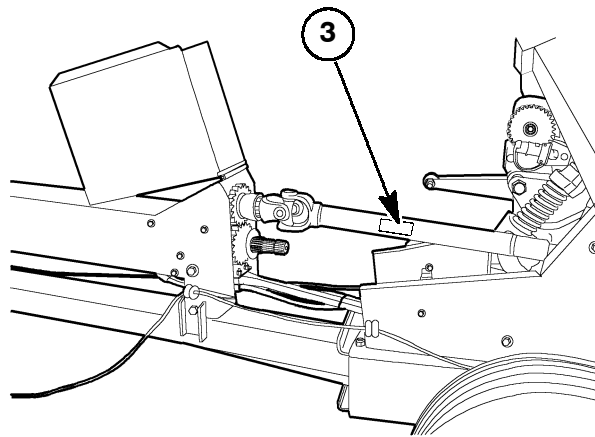
19997169



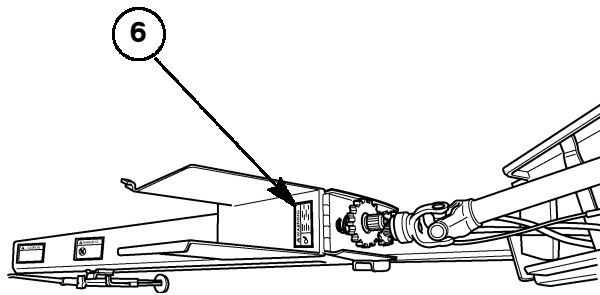
10998196



10998203



19997189



10998205

**Thanks very much for your reading,  
Want to get more information,  
Please click here, Then get the complete  
manual**

**JustClickHere** 

**NOTE:**

**If there is no response to click on the link above,  
please download the PDF document first, and then  
click on it.**

**Have any questions please write to me:  
[admin@servicemanualperfect.com](mailto:admin@servicemanualperfect.com)**